

NEW INSTALLATION NOTICE

INSTALLATION CHANGE FOR PRESSURE SWITCH THAT TURNS THE UV OFF WHEN THE PUMP TURNS OFF



1. TAP ¼" JG NPT VALVE (SEEN IN FIGURE 1) INTO PUMP DISCHARGE PLUMBING, **BEFORE FILTER. WARNING: TAPPING IN AFTER FILTER CAN CAUSE DAMAGE, (VOIDING THE WARRANTY) FROM PRESSURE DROP WHEN THE FILTER NEEDS BACKWASHING. THE CONTACTOR WILL ENGAGE AND DISENGAGE RAPIDLY, CAUSING THE BALLAST AND LAMPS TO FAIL.**
2. CONNECT THE PRESSURE SWITCH TO THE VALVE WITH ¼" TUBING.
3. ONCE THE PUMP IS ON, BLEED THE AIR FROM THE TUBING BY BRIEFLY DISCONNECTING THE TUBING FROM THE PRESSURE SWITCH.
4. TO TEST THE PRESSURE SWITCH: ENSURE THE SAFTY COVER IS INSTALLED AND THE POOL PUMP IS ON. PLUG IN THE FRONT 120V POWER CORD, THE ONE WITH NO LABELS SEEN IN FIGURE 2. THE CONTACTOR WILL ENGAGE, SEEN IN FIGURE 3. TURN THE POOL PUMP OFF AND THE CONTACTOR SHOULD DISENGAGE.



FIGURE 1



FIGURE 2

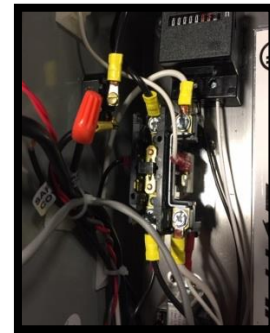


FIGURE 3